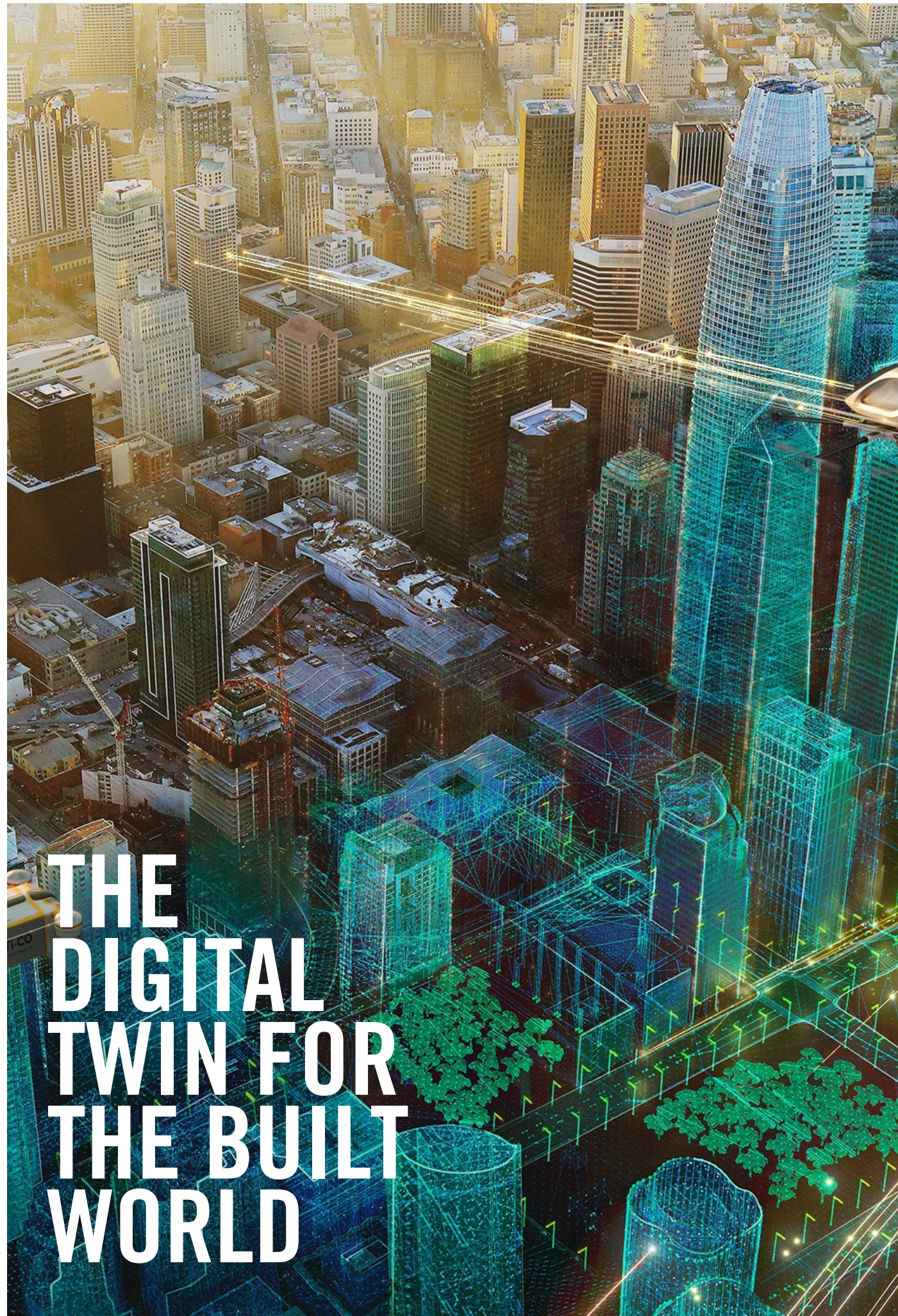




willow  
know your world

**OVERVIEW**  
April 2019





# THE DIGITAL TWIN FOR THE BUILT WORLD

Willow is the digital twin for the built world.

Willow is a global technology company, with offices in Sydney, Melbourne, New York, Seattle, London and Tel Aviv. We provide a software platform, WillowTwin™ and professional services, WillowDigital™ to accelerate digital adoption.

For more, visit [www.willowinc.com](http://www.willowinc.com)



# WHAT DOES WILLOW DO?

Willow delivers a software platform, WillowTwin™ and professional services, WillowDigital™ to accelerate digital adoption

These distinct, but related parts of our business work together to improve new project outcomes and uplift existing buildings and infrastructure networks, enabling smarter operations and better experiences.





**WILLOWDIGITAL™  
STARTS WITH THE  
END IN MIND**

WillowDigital™ delivers digital engineering and architecture services to customers.

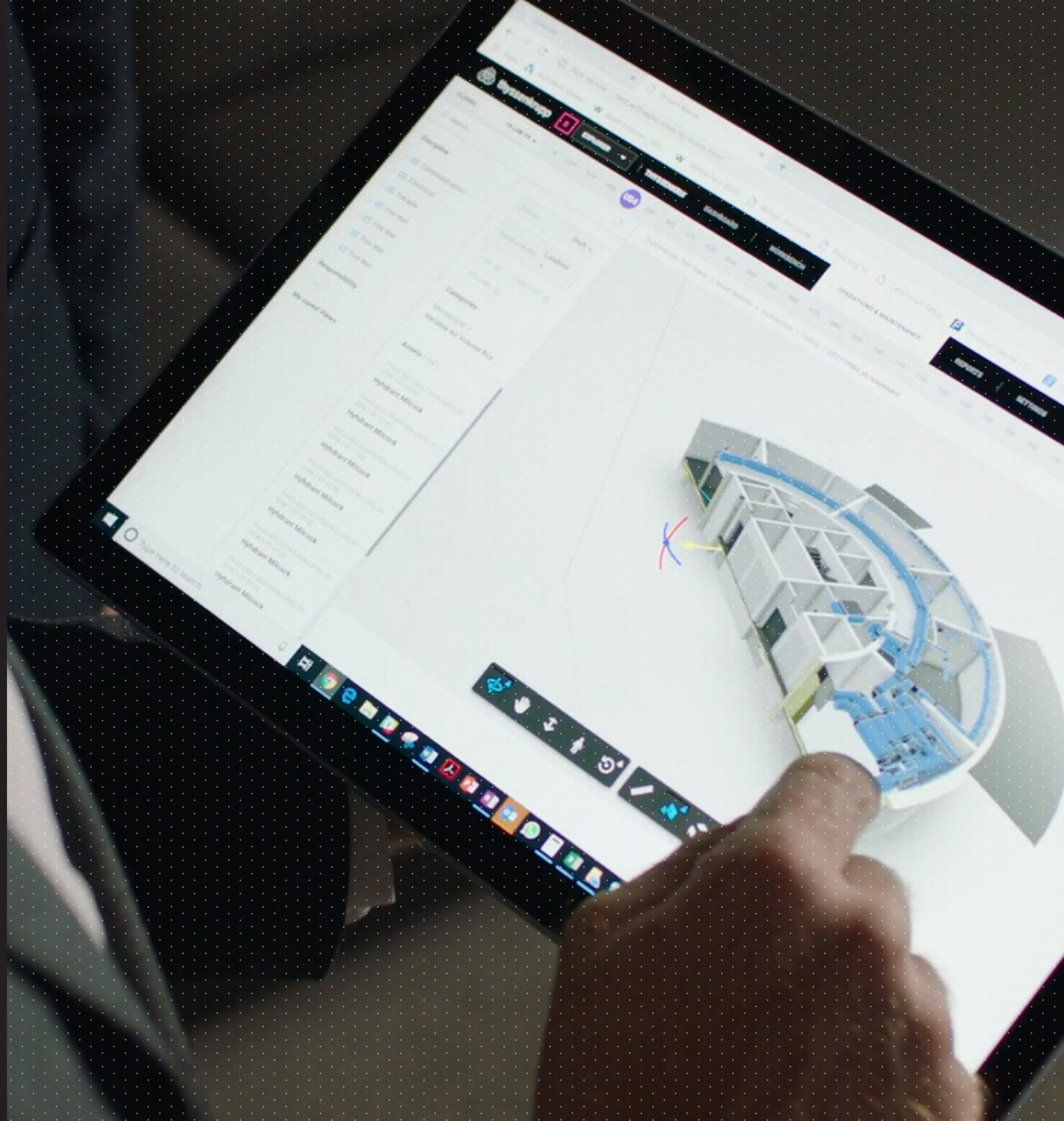
The WillowDigital™ team understands the processes required to harness the technology of today, innovation of tomorrow and unlock the power of data within the portfolios of both buildings and infrastructure networks.



**WillowTwin™ is a ground-breaking software platform that re-imagines the digital twin for the built world. WillowTwin™ integrates, analyses and manages data at scale, delivering insights to improve performance and experience of buildings and infrastructure networks.**

The platform draws on static, historic and live operating data to create actionable insights that not only provide efficiencies but transforms the way in which occupants and users engage with the assets.

WillowTwin™ also allows owners to prepare their data for open protocol communication and connectivity. Allowing fast, secure and scalable integrations.





# A COMPLETELY CUSTOMISABLE APPLICATION

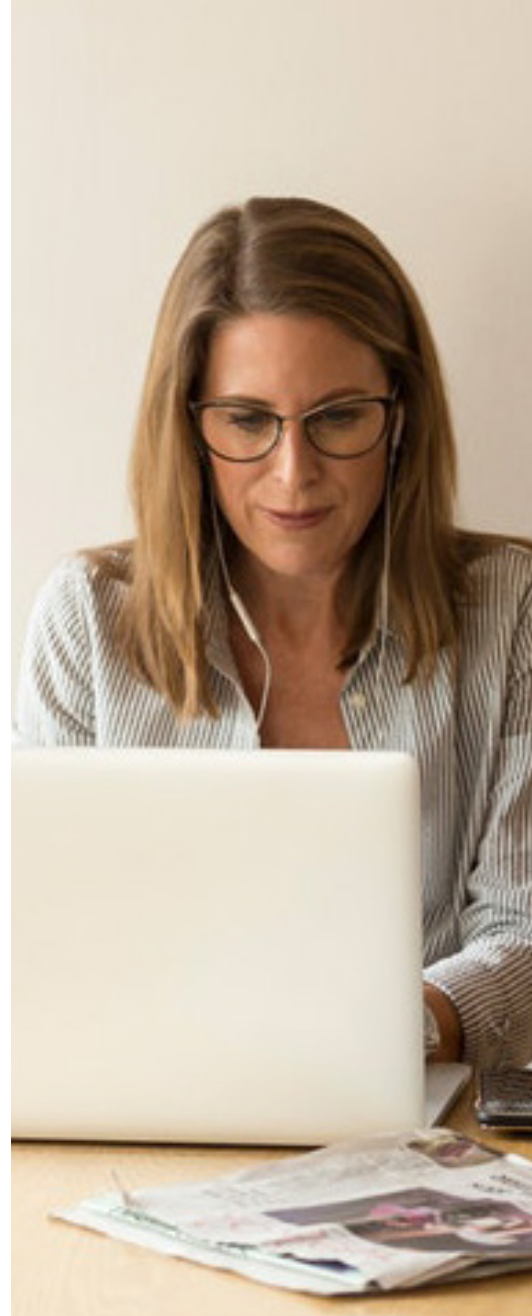
**Willow also offers a completely customisable application to differentiate your building or infrastructure network. Providing your occupants with an easy-to-use mobile application. Through Willow owners can improve occupant experience, retention and safety whilst providing the owners visibility on spatial use, potential future issues and occupant safety.**

Willow helps building managers through a simple, all-in-one interface for occupant management and enables the creation of future ready building and infrastructure network portfolios, to create a competitive edge.



# WHO CAN BENEFIT FROM WILLOW'S SOLUTION?

Through Willow customers can make smarter decisions relating to how their company is addressing energy efficiency, spatial utilisation, occupant experience and the regulatory compliance of buildings and infrastructure networks.



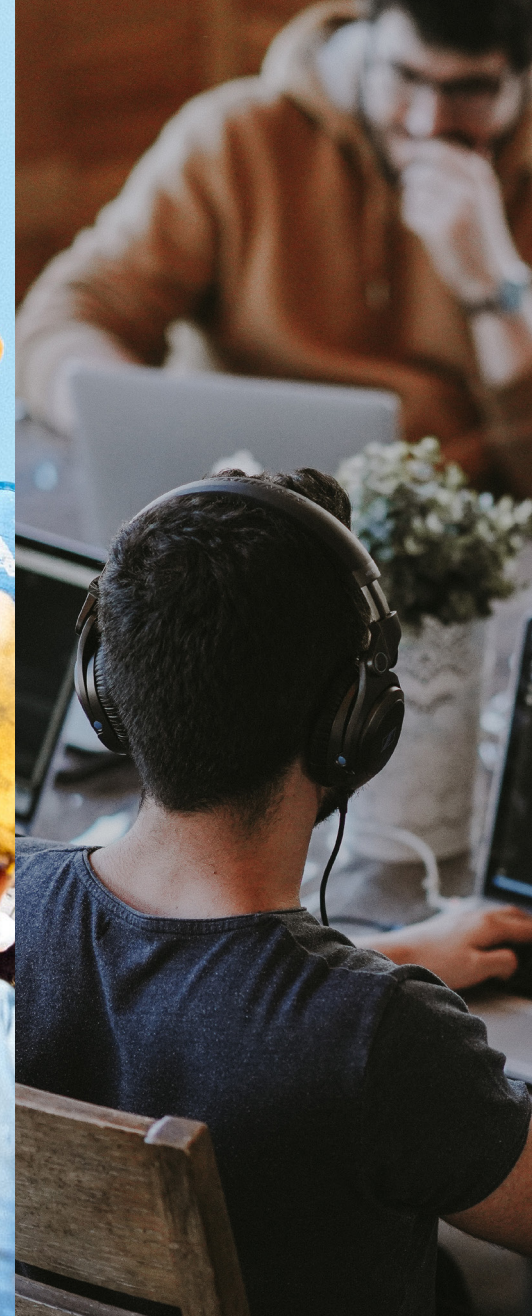
## Owners

Reduce their costs in construction, operations and increase their profits



## Contractors

Reduce risk and expedite construction and improve the speed and efficiency of handover



## Occupants

Have a more connected experience in their building and have access to a community



## Building Managers

Run their buildings more effectively and efficiently



# WHO ARE WE CURRENTLY WORKING WITH?

Commercial Real Estate  
Fortune 500 Companies  
Major Infrastructure  
Major Contractors





An aerial photograph of a dense urban skyline, likely New York City, featuring numerous skyscrapers and buildings. The image is overlaid with a grid of small, light purple dots. Centered on the image is a large text block in white and purple.

**OUR MISSION IS TO EMPOWER  
EVERY PERSON AND ORGANISATION  
TO CONNECT WITH THE BUILT  
WORLD IN A WHOLE NEW WAY**



# WANT TO SEE WILLOW IN ACTION?

**With the Digital Twin, Willow is ready to transform the way owners, operators and the broader community understand and interact with their built world.**

**Talk to us today.**

**[www.willowinc.com](http://www.willowinc.com)**