

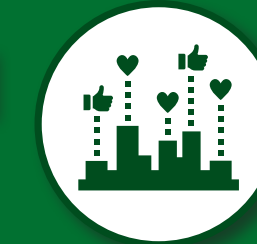


# Smart Buildings Portfolio

**\$10B** Value of the Real Property Assets Serviced



**207** Total Facilities Integrated for our Customers

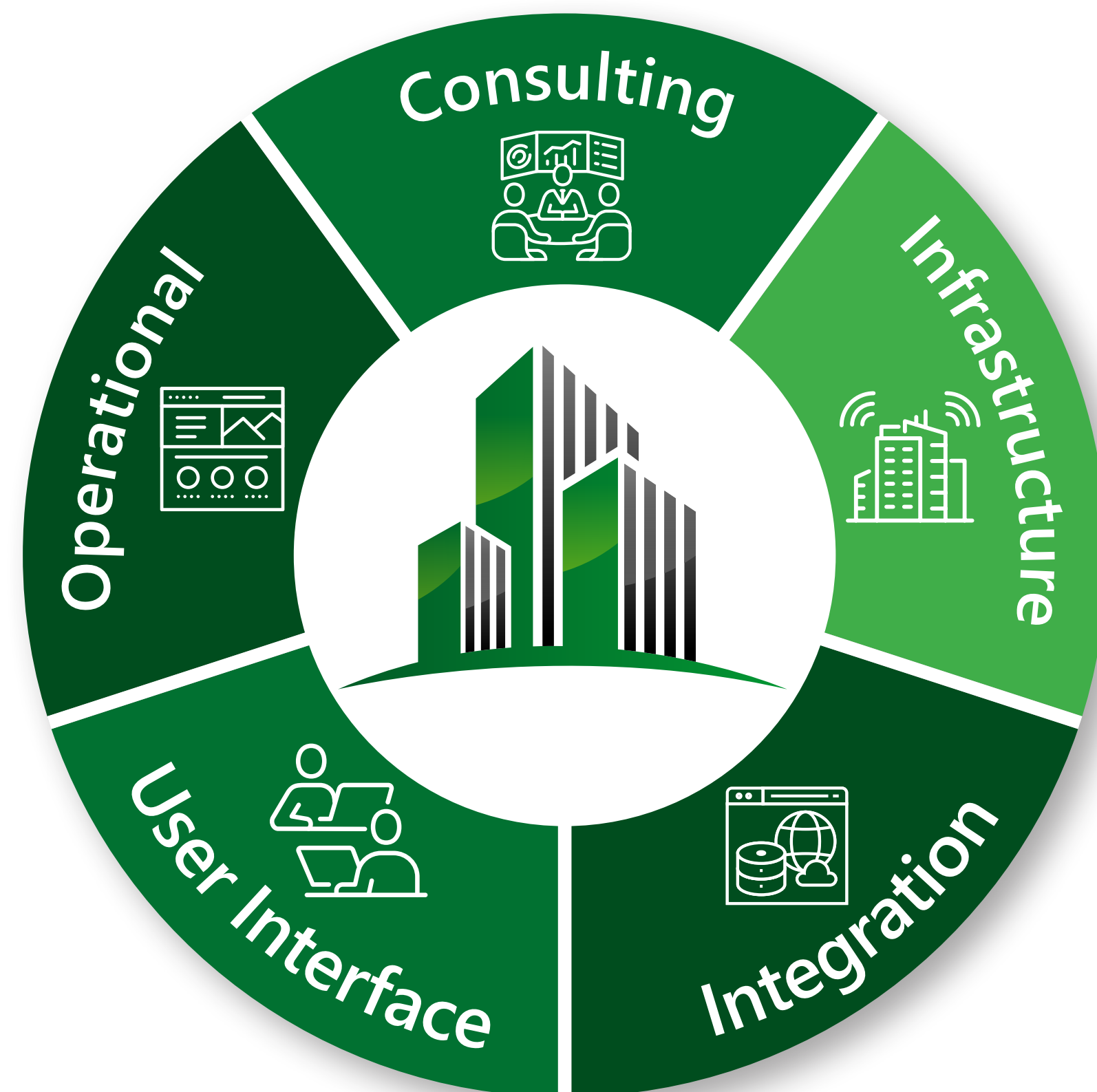


**55** Total Number of Cities where we are Delivering Projects



## Enterprise Connected Building And Infrastructure Capabilities

### » SMART BUILDINGS SOLUTION



### » SMART BUILDING SERVICES/SOLUTIONS

#### Master Systems Integration (MSI)

- Building Control Configuration and Installation
- Building Automation System (BAS) Optimization
- Solution Architecture Engineering and Design
- Custom User Interface and User Experience Design

#### Enterprise Support Center

- 24/7 Remote Monitoring and Support
- Advanced Analytics and Fault Detection
- On-site Planned and Preventative Maintenance
- Internet of Things and Operational Technology (IoT & OT) Security

#### Engineering and Energy Efficiency

- System and Site Commissioning
- Professional Engineering (PE) Construction Mgmt
- Certified Energy Management (CEM) Oversight
- Advanced Metering and Utility Bill Validation

### » DIFFERENTIATORS/CERTIFICATIONS

#### Building Controls Capabilities

- |             |                      |                |
|-------------|----------------------|----------------|
| • Niagara   | • Johnson Controls   | • Carrier      |
| • Distech   | • Schneider Electric | • Honeywell    |
| • Lynxpring | • Trane              | • Oncicon      |
| • Vykon     | • Automated Logic    | • KMC Controls |
| • Alerton   | • Siemens            | • ABB          |
| • Delta     | • EasyIO             | • Isma         |

#### Infrastructure Licenses/Certifications

- Professional Engineer P.E.
- BICSI Installer
- Certified Energy Manager (CEM)
- Certified Building Commissioning Professional (CBCP)

#### Awards

- Vykon Integrator of the Year
- Realcomm Digie Award - Best Use of Automation



[www.TheBuildingPeople.com](http://www.TheBuildingPeople.com)

215 Depot Court SE ▪ 3rd Floor ▪ Leesburg, Virginia 20175

