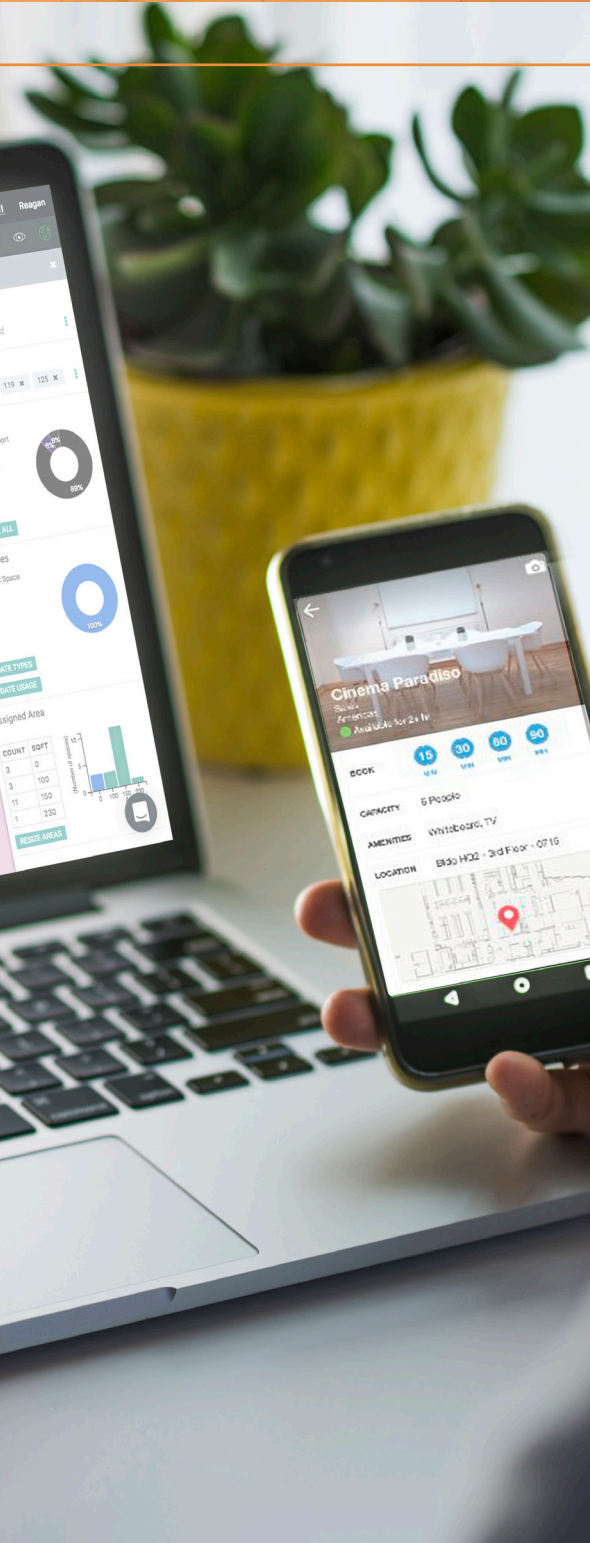




# Reimagine Your Workplace™

SpaceIQ is leading the digital transformation of the workplace.



## INCREASE WORKPLACE ROI

- Eliminate manual tasks, paper record keeping
- Increase workplace visibility
- Connect enterprise data for cost insights
- Make lease decisions using AI-driven analytics
- Effectively use existing space
- Leverage real-time utilization and information

*“Before SpaceIQ, we would probably have two mail clerks. Now, we were able to cut that down to one.”*

Tyler Quist  
Material & Warehouse Manager, Merit Medical

## IMPROVE EFFICIENCY

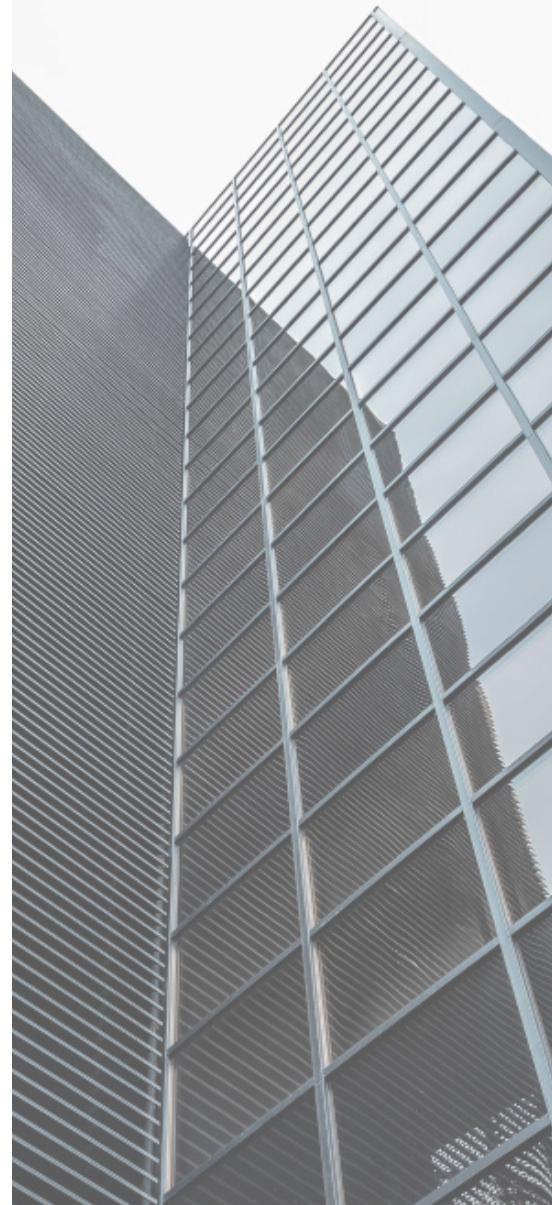
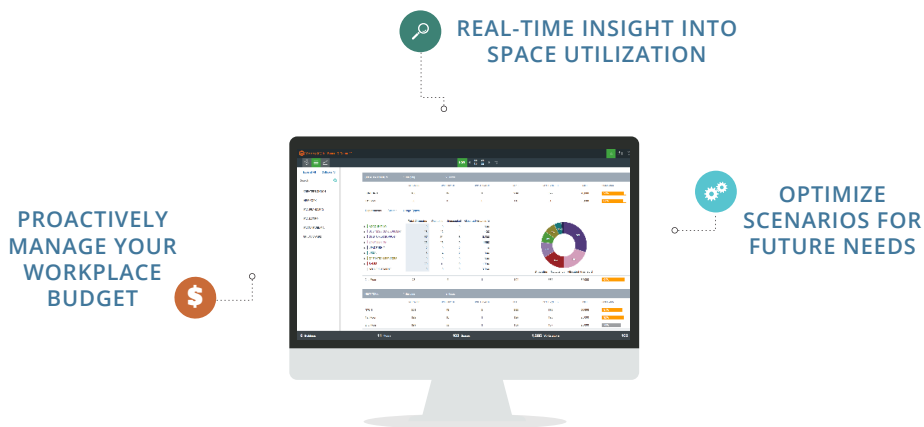
- Reduce task time from weeks to minutes
- Delegate organizational tasks efficiently
- Centralize your workplace system of record
  - Real Estate and Leases
  - Facilities and Seating/Employees
  - Asset and Meeting Room Management

## ENGAGE EMPLOYEES

- Maximize collaboration and innovation by adjusting work environments to fit individual and team needs
- Facilitate streamlined processes by connecting SpacelQ to Slack, Workday, Jira, and more
- Build loyalty and retain top talent with state of the art workplaces and technologies

“42% of Millennials would quit their job without the right technology”

(Future Workforce Study - Dell/Intel)



## LEADING BRANDS USE SPACEIQ

glassdoor

IAC

BuzzFeed

EASTWESTBANK

ACT

slack

GE Healthcare

Nasdaq

jetBlue

ATLASSIAN

(to name a few)